

Monitoring the River Gade

The Effect of Rerouting and Improvements to the River

Rodney and I have been monitoring the river Gade every month since 2017

- Using this equipment:
a square net, bucket, white tray and sorting tray.

This entails carrying out a three-minute kick sample, then a one-minute side sample.



Then sorting the riverfly larvae that we find and counting and recording the number of each species.



Riverfly species we catch include Cased Caddis,.



Caseless caddis

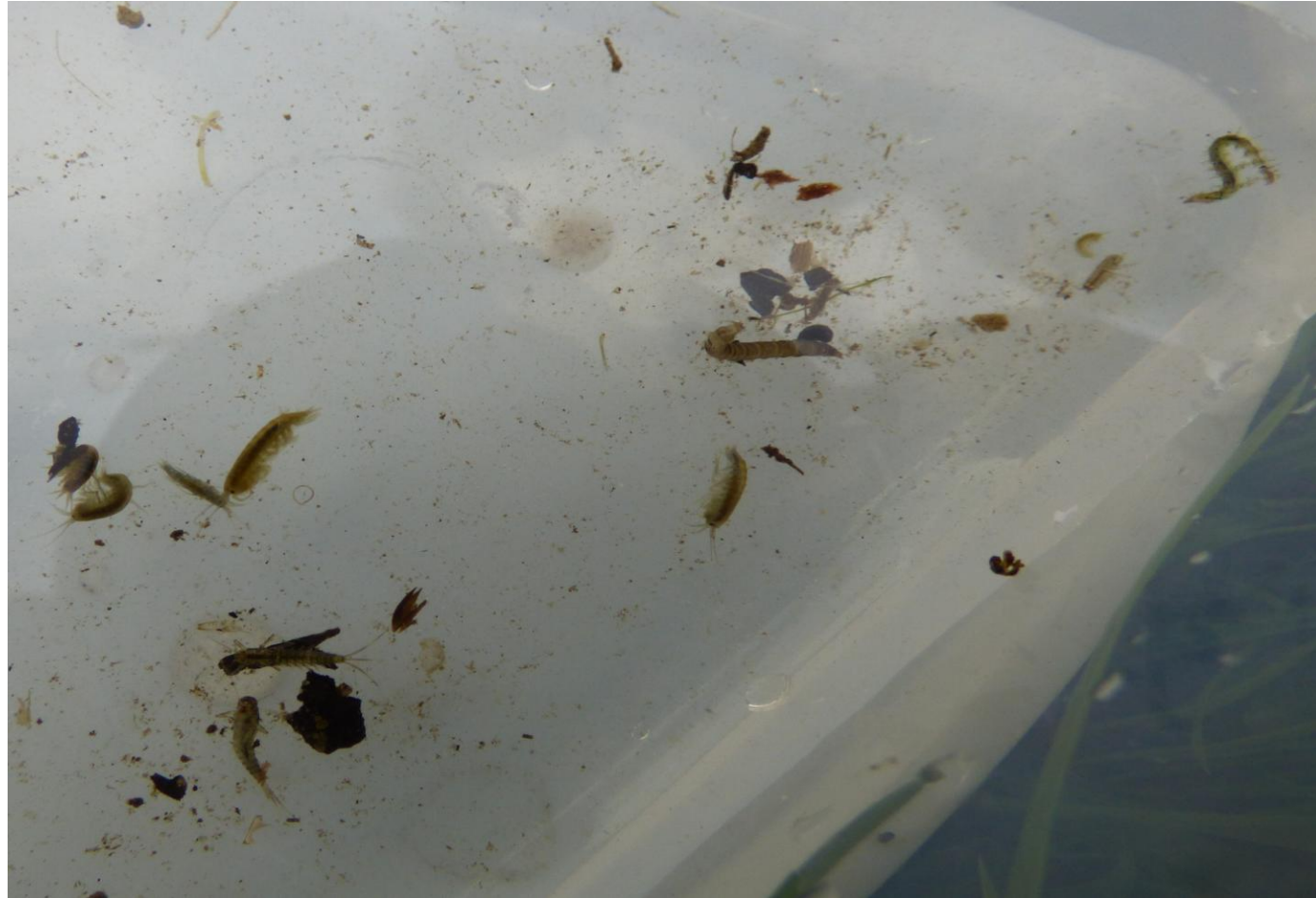




Mayfly



And Gammarus (freshwater shrimps)



Why monitor?

- These creatures are sensitive to pollution, so are an indicator of river quality.

We monitor two sites, one above the outflow by the Link Road



And one near the Skatepark



When we first started to monitor the river, the site near the Link road often produced low scores

- And sometimes the trigger point was breached (see graph 2017)

In 2018 work was carried out by Affinity Water between Gadebridge Lane and the Link Road.

- Riffs and small meanders were created in the river channel to make new habitats, and encourage the river to flow faster.
- Also, a settlement pond was built to catch the water from the outflow, to reduce pollution flowing into the river from the road.

This had a positive effect on the results of the monitoring

- The scores haven't dropped below the trigger point since the alterations were completed Autumn (2018)
- (graph 2019)

In 2025, the river below the White Bridge in the park was re-routed.

- Now the river no longer flows in a perched channel
- Meanders have been created, to form different habitats.
- A spring has been rerouted so that it joins the river in the park.
- New vegetation has been planted on the river sides - Ragged Robin, Marsh Marigold and Purple Loosestrife etc. to create different habitats for insects.

And in the river channel - Water Crowfoot



Since the rerouting

- Scores by the Skatepark have been consistent.
- See (2024 then2026 slide)
- The river is flowing much faster than before
- Monitoring by the Environment agency has found several adult Trout and evidence of Redds which the trout create for breeding.

Redds – trout spawning

(photo from the Environment Agency)

